



ACT JUNIOR CHESS LEAGUE



2010 Winter Camp Report

A report on the 2010 Winter Camp & Template for running similar holiday programs.

CONTENTS

Administration & Planning	2-4
• Aims of the Program	2
• Planning & Promotion	2
• Selection of Participants	3
• Inclusions	4
Attachments	5-26
• 2010 Winter Camp Schedule	8
• 2010 Winter Camp Budget	10
• 2010 Winter Camp Coaching Groups	11
• 2010 Winter Camp Teams	12
• 2010 Winter Camp Prizewinners	13
• 2010 Winter Camp Lightning Results	14
• 2010 Winter Camp Transfer Results	17
• 2010 Winter Camp Rapid Results	19
• 2010 Puzzle Worksheet	22
• 2010 Puzzle Answer Sheet	24
• 2010 Winter Camp Shirt Design	26

Aims of the Program

The 2010 Winter Camp, as with the Chess Chicks, aims to provide more than a fun, inexpensive, school holiday activity - it aims to provide a quality chess development experience.

The program actively targets players based on their level of participation over the previous 12 months. It therefore identifies a broad group of participants, some of whom will be elite and well known, others however, may be less recognized but clearly demonstrating both personal interest and parental support in pursuing the sport of chess. Their ability (points scored in events) is not significant to inclusion.

For the more elite and experienced players the program aims to offer:

- quality coaching appropriate to their level of experience; and
- an opportunity to develop leadership skills as they mentor and support the members of their team.

For the less experienced players the program offers:

- recognition, having been offered the opportunity for the event;
- quality coaching, allowing them to increase their level of skill and their confidence as a player;
- a focus on good sportsmanship & supporting other members of their team;
- exposure to the game at a higher level, cross-promoting activities such as the ACT Junior Championship, the Australian Junior Championship, and the Development Squad for the following year; and
- an opportunity to develop new friendships with other like-minded participants.

For the ACT Junior Chess League the program draws attention to players who may be "under the radar" - whose level of interest and participation should suggest future involvement from the player and family.

Planning & Promotion

First offers to participants were made approximately 10 weeks before the program was to take place. The program was fully booked, and expanded and again fully booked, approximately six weeks before it was due to run.

Participants were required to pay in full and in advance - this ensures a firm commitment and allows expenditure for the Camp with confidence in the level of funding. It also means other children are not turned away unnecessarily.

The Camp still had a waiting list however no expansion of Camp numbers was made unless coaches of sufficient quality were available. It was deemed that 60 was the maximum, manageable number of participants given the resources available and the intended structure of the program. Based on past experience, 36-42 participants is

more supportive of the team-based structure of the event but the program still ran successfully with 60 participants. The coach to group ratio was maintained at 1:6 without exception.

The initial offers to participants were made by direct email to families. At the same time the program was advertised to the full ACTJCL list however those outside of the "invited" list had to wait approximately 10 days for any remaining places to be made available.

This strategy of "priority places" creates demand for places because it creates a perception of quality and exclusivity. There was significant interest from the first advertising of the event from players who had not been offered a "priority place."

This additional interest, and bookings from invited players, meant that more than the initial 48 places had already been booked by 10 May, having first been advertised on 19 April and not taking place until 5 July.

The program was also directly advertised to schools, to past participants in the Chess Chicks, and in the flyer handed to participants at the interschool events.

Selection of Participants

Initial offers to participants were made by trawling through player lists from all ACTJCL events over the past 12 months. Offers were made to the 48 players to have played in the most events in the past 12 months provided they had played at least one 2010 event.

Of the final 60 participants, 25 were on that original list.

17/60 of 2010 participants were members of the 2010 Chess Chicks Program, and 27/60 overall were girls - almost 50% - *an exceptional result*.

16/60 were from Curtin Primary, larger groups of participants also coming from Radford College & Turner School.

Of the final list, only 4-5 of the 60 participants would be what I would classify as players with a fringe interest in chess, most are children seen previously at events and, hopefully, involvement in a program like the Winter camp, will bolster their participation and potentially lead the less experienced into participation at the next level of the game.

Inclusions

From the Budget (attached) it can easily be seen that the program has been run on a “break-even” basis. The program is inexpensive and offers a high return to participants. An increase from \$100 per participant to \$110 or \$120 could easily put the program on a “for-profit” footing and retain the same quality of inclusions.

6x Quality Coaching Sessions - essential

The program maintains a good reputation, and remains suitable for players of all standards, only if the quality of coaches remains high. Ideally all coaches are able to coach every group, from weakest to strongest. If the program expands (as did Winter Camp) a greater range of coaches can be used as not every coach will have a session with every group. The roster for the 2010 Camp was:

	Mon 9.45	Mon 12.30	Mon 2.15	Tues 9.15	Tues 11.00	Tues 1.30
Alana	Nguyen	Dekic	Solomon	Johansen	Guo	Reid
Junta	Zhao	Smerdon	Caoili	Xie	Nguyen	Dekic
Jeff	Solomon	Johansen	Guo	Reid	Zhao	Smerdon
Josh	Caoili	Xie	Nguyen	Dekic	Solomon	Johansen
Ian	Guo	Reid	Zhao	Smerdon	Caoili	Xie
Emma	Dekic	Solomon	Johansen	Guo	Reid	Zhao
Sherab	Smerdon	Caoili	Xie	Nguyen	Dekic	Solomon
Andrew	Johansen	Guo	Reid	Zhao	Smerdon	Caoili
Simon	Xie	Nguyen	Dekic	Solomon	Johansen	Guo
Andre	Reid	Zhao	Smerdon	Caoili	Xie	Nguyen

By rotating the groups, players experience a range of coaching experiences and more readily remain interested and motivated. It reduces the pressure on coaches in both managing their groups, and also in the amount of material they need to prepare.

Team based trophies - essential

The team format is integral to the program as currently structured. These trophies are more significant than the small medals awarded for players who individually win the tournaments held over the three days.

Team based awards ensure children of all standards can aspire to win the trophies at the event. Team based awards also support the program goals of developing the leadership skills of the senior players; of helping new players to build networks & friendships with other players; and of promoting good sportsmanship and camaraderie amongst participants.

Tournaments - essential

The Lightning & Transfer events provide an opportunity to finish each of the first two days with a “fun” event. They take place at the end of the day when participants may be more tired and less able to focus on further coaching.

In the past, the Transfer was scheduled for the first day. This was changed in 2010 due to the anticipated absence of a player (giving an odd number on the Monday).

It is recommended that the Transfer event be run on the first day if possible as the pairing of team members gives a focus to getting to know other members from a team.

The final Rapid event is the culmination of the event. Players are able to use new skills and are also expected to record their moves and have the games analysed. Match analysis is a new experience for many participants and provides an invaluable learning experience.

“Making an effort” is emphasised as younger participants may struggle with recording moves. One coach (Alana this year) has focused on these skills with young participants who are helped & supported with their efforts throughout the tournament.

T-shirt - highly desirable

A souvenir shirt helps to create a sense of belonging to something special and unique. It is a particularly useful tool among primary school participants. Most sports development and representative programs will supply this kind of shirt.

Not only does the shirt provide something special for participants, it is an active promotional tool for the ACTJCL organization and programs every time it is worn.

This photo (right, of the ACTJCL players at the 2006 Australian Juniors in Brisbane) shows how effective a shirt can be in creating a sense of being part of something and advertising the presence of a “successful” organization.



Personalising the shirt for players (with their name) has been popular with participants.

Coach’s Awards or Book Prizes - highly desirable

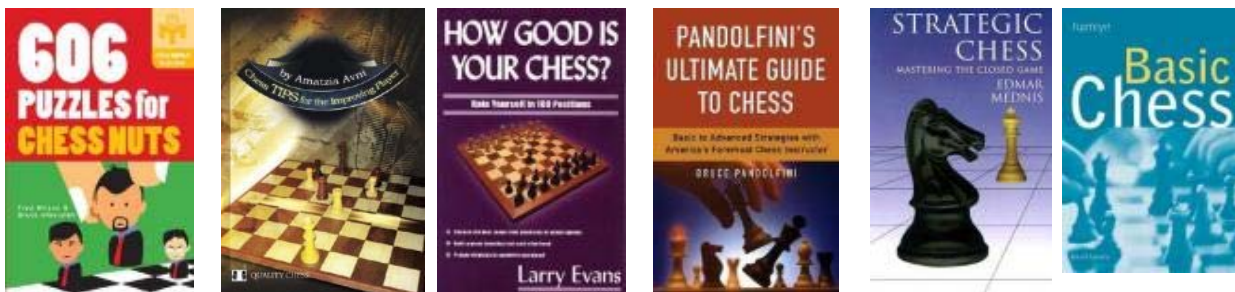
Awards recognizing excellence in endeavor and participation are very desirable in a development program.

At the conclusion of each of the coaching sessions, each coach allocates a total of 6 points to participants in the group on slips like the one indicated (below).

Most often 3, 2, 1 points are awarded for effort and attitude, but other combinations are permitted (for example 1 point to each participant), not exceeding 6 points per session. No player is allocated more than 3 points per coaching session.

Coach: Junta	Points
Jak Carty	
Michael Kethro	
Glen Qi	
Willis Lo	
Donghoon Shin	
Bazli Karittiyattil	

Players who are part of the winning team are excluded from book prizes. This ensures a broad distribution of prizes in the event. Some of the 10 books awarded in 2010 were:



Pizza Lunch - highly desirable

This allows a fun, celebration lunch on the final day.

Medals for tournament winners - recommended

There is no imperative for individual awards in a team-based development activity however medals can be awarded for first place overall in the Lightning, Transfer & Rapid events.

It is not recommended that this be extended to additional placegetters or age-based awards. This removes from the team focus, and continues to award children who are likely to receive recognition in other tournaments throughout the year.

Lucky Draws - recommended

This is a popular feature of the event but easily removed if costs are too high.

Approximately one-third of participants receive a luck draw each day. Every child will have their name drawn out once over the course of the event, and they then draw out a number and are awarded the prize that matches the number.

Examples of lucky draw prizes appear on the budget page. For 2010 they ranged from \$1 chess wristbands and \$3 chess badges, to \$20 glass chess sets and \$32 chess sets in carry cylinders. With the exception of the movie tickets, all had a chess "theme."

Afternoon Tea - when affordable

The inclusion of afternoon tea on the first two days of the event is popular with participants but not integral to the program.

It is labour intensive for the organizer (purchase, preparation, serving and clean-up) and creates potential for issues to do with food hygiene & allergies.

When provided, as in 2010, it includes a mix of fruit, biscuits & cake, dips, chips & sweets.

2010 Winter Camp Schedule

The program will run from 9am until 5pm over three consecutive days. All the challenges, competitions and activities have the possibility to accumulate points towards the overall score for the team each player is randomly allocated to.

Monday 5 July

8.45am Player registration

9.00 **Team allocations** Players are allocated to teams based on a series of random draws. Each team is made up of one player from each of the ten (ability-based) coaching groups.

9.15am **Chessboard relay!** We start the day with the teams racing one another to collect all the equipment needed to set up a board ready to play!

9.30am **1st coaching session** Each group has one session with six of the ten coaches covering a range of essential skills. Our coaches are able to tailor the sessions appropriately to cater to the differences in skill between the various groups which range from children with international experience to beginners of only 5-7 years of age.

11.00am **Test your memory!** A memory game where each team has to try to remember the 30 items concealed under the tablecloth. This is a cooperative challenge.

11.15am 2nd coaching session

12.45pm lunch break

1.30pm **Pawn & Spoon relay!**

1.45pm 3rd coaching session

3.15pm **Lightning Tournament**

5pm Pick up time

Tuesday 6 July

9am **Chessboard relay!**

9.15am 4th coaching session

10.45am **Puzzle challenge** Everyone has a sheet of puzzles to solve, some a simple mate in one, some more complex. Points are allocated to each team based on the number of puzzles solved by each player.

11am 5th coaching session

- 12.30pm lunch break
- 1.15pm Chess Hunt! Each team must find all the hidden pieces to be able to set up a game
- 1.30pm 6th coaching session
- 3pm Transfer tournament Members from each team are randomly paired to create 5x transfer pairs representing each of our teams.
- 5pm Pick up time

Wednesday 7 July

Winter Camp Championship

9am Clocks are started! 7x games with 30mins per player on the clock - players to record moves and coaches to provide as much analysis as practical. Alana's coaching will include teaching new players how to record moves and players have nothing to fear! Everyone is expected to *try* but no-one is penalised for mistakes. If a game is (reasonably) well recorded our coaches will be able to replay the game with the participants and help them to find those good, bad & ugly moves to improve on for next time! It's an invaluable learning experience as many new players do not recognise that an eventual loss was perhaps the result of moves much earlier in the game, or of continuing to walk into easily avoided traps. It also helps players who may be winning against inexperienced opponents but can't make the transition to good results against tougher opposition, as they need to learn to calculate in more complex positions rather than rely on one-move threats (or mistakes from their opponent).

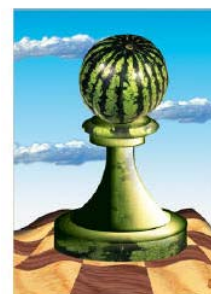
Many participants are young & inexperienced. Your son or daughter will not be alone if they haven't done this before so please don't worry about it yourself, or let them worry about it! We'd like to see ALL Winter Campers ready to confidently enter the ACT Junior Championship in the next school holidays where they will need to record their moves.

Presentations at 5pm

2010 Winter Camp Budget

Winter Camp Expense	Cost	Quantity	Details
Coaches	3500	10	U18 @ \$300 / adult @ \$375
Venue Hire	225		Not actually expended (no change for use of Turner School)
Screen set up for shirts	66		Capital Trophies Invoice #00025367
Additional shirts	37.5	2	Aelfric/Olivia & Michael/David (cancellations/replacements)
T-Shirts	1125	60	Capital Trophies Invoice #00025367
Wristbands, Posters & Tube Set	97.75	27	Gardiner Chess Invoice 60137
LCD Chess Master Games	29.97	3	Dick Smith Receipt 15/5/10
Badges	76	24	ChessKids Invoice 00004945
Scorebooks	19.9	2	Aus Chess Enterprises invoice 00100932
Poster Frames	21	6	Top Bargain Receipt 29/6/10
Drinks	31.68	72*0.44	price based on 4 July purchase cost (114 drinks)*
Pizza	240.5	37x6.50	Dominos receipt
Trophies	183.6	10	Capital Trophies Invoice 00025328
Books	28.72	2	A&R online order #121780
Books	90.45	8	A&R online order #116232
Ribbons	60	60	From stock
Rating Fee	10.5	30*7*0.05	Rapid Event
Afternoon Teas	47.26		Woolworths 5/7
Afternoon Teas	70.38		Woolworths 4/7
Movie Tickets	24	2	Dendy Receipt 29/6/10
Glass Chess Set	39.98	2	Myer Receipt 22/5/10
TOTAL	6025.19		\$6040 collected (60x entry fees + 2x extra shirts)
			Canteen takings \$211
			* excess drinks were delivered to ACTJCL stock at Campbell

Lucky draws included some of the following items:



2010 Winter Camp Coaching Groups - *age, gender & ability based*

Zhao	Normal	Rapid	Smerdon	Normal	Rapid
Jak Carty	1090	751	Harry Press	630	922
Michael Kethro	1298	1057	Daniel Cordeiro	581	540
Glen Qi	1006	1091	James Ashton	708	558
Willis Lo	1493	1268	Nikhil Kalele	528	664
Donghoon Shin	549	661	Christopher Bradley	531	456
Bazli Karittiyattil	865	808	Isaac Skinner	407	658
Caoli	Normal	Rapid	Nguyen	Normal	Rapid
Amy Flood	379	504	Amy Nicholson	100	284
Aynslie Jewell	353	158	Tina Li		236
Rosie Kirk	131	230	Kathleen Tong	438	446
Anna Zhou	424	864	Kezia Karenina	246	454
Aislinn Smith	303	458	Renee Wu		373
Grace Lanspeary	435	470	Hannah Derwent		351
Johansen	Normal	Rapid	Solomon	Normal	Rapid
Joey Yuan			Jeremy Nicholson		189
Andrew Lanspeary			Barkly Hyett		243
Itay Elkoubi			Adam Glanville		221
Wesley Lo	100		Finn Campbell		280
Lucas King			Ben Lester		147
Daniel Searle		274	David Mackay		176
Guo	Normal	Rapid	Reid	Normal	Rapid
Heidi Willis			Hamish Anderson		
Mercedes Macfarlane			Zoe Sugerman		
Angela Lanspeary			Erica Kethro		
Olivia Hutley			Elvin Lee		
Olivia Tozer			Pascal Souksavat		
Isobel Polak			Callum Anderson		
Xie	Normal	Rapid	Dekic	Normal	Rapid
Sebastian Dal Pozzo		495	Lucy Sugerman		264
Mark Glanville	191	569	Isabella Bishop		188
Daniel Neely		517	Helen Tong	151	218
Daniel Lowe		458	Natalie Villarreal		158
Caleb Campbell	3g	247	Tahlia Harsdorf		121
Walter Wolffs	230	331	Charlotte Murphy		100

NB Coaching groups named after the 10 members of the Australian team for the Olympiad!

2010 Winter Camp Teams - *one child in each team from each ability based coaching group & led by a more senior player*

Captain: Jak Carty	Captain: Michael Kethro	Captain: Glen Qi
Isaac Skinner	Christopher Bradley	Nikhil Kalele
Grace Lanspeary	Aynsle Jewell	Aislinn Smith
Lucas King	Wesley Lo	Itay Elkoubi
Olivia Hutley	Heidi Willis	Mercedes Macfarlane
Caleb Campbell	Daniel Lowe	Sebastian dal Pozzo
Renee Wu	Tina Li	Kezia Karenina
Ben Lester	David Mackey	Adam Glanville
Elvin Lee	Zoe Sugerman	Pascal Souksavat
Charlotte Murphy	Isabella Bishop	Tahlia Harsdorf
Captain: Willis Lo	Captain: Donghoon Shin	Captain: Bazli Karittiyattil
Harry Press	James Ashton	Daniel Cordeiro
Anna Zhou	Amy Flood	Rosie Kirk
Andrew Lanspeary	Daniel Searle	Joey Yuan
Isobel Polak	Olivia Tozer	Angela Lanspeary
Mark Glanville	Walter Wolffs	Daniel Neely
Amy Nicholson	Kathleen Tong	Hannah Derwent
Finn Campbell	Barkly Hyett	Jeremy Nicholson
Hamish Anderson	Callum Anderson	Erica Kethro
Helen Tong	Natalie Villarreal	Lucy Sugerman

Teams were allocated by random draw on the first morning of the activity.

When teams were disadvantaged (by the absence of a player for part - or all - of the event) adjustments were made to reflect the "average" score achieved by children of equivalent ability (determined by the coaching group).

For example, when Andrew Lanspeary and Itay Elkoubi missed the Rapid event, the scores achieved by Lucas, Wesley, Daniel & Joey were averaged and the points allocated to Team Willis & Team Glen.

The Transfer event was more difficult and a coach had to partner Charlotte Murphy. As being partnered with Emma Guo was likely to lead to a higher than expected score, every team including a player from the "Dekic" coaching group (Charlotte's) and every team including a player from the "Guo" coaching group (Olivia Hutley being the absent player) had their score averaged. As the average was less than Emma & Charlotte's actual score, Team Jak had their total score reduced to reflect the "average" score.

2010 Winter Camp Prizewinners

The program has a clear, team-based focus. By having a mix of age, ability & gender in each team, the winning team is assured of reflecting the full range of participants and awarding players who may not necessarily win awards at other events.

Winning Team - Team Willis

Willis Lo, Harry Press, Anna Zhou, Andrew Lanspeary, Isobel Polak, Mark Glanville, Amy Nicholson, Finn Campbell, Helen Tong & Hamish Anderson

Team Results

	Bazli	Willis	Donghoon	Michael	Jak	Glen
Relay	6	5	2	2	4	2
Memory	23	22	18	18	22	16
P&Spoon	3	5	2	1	4	6
Lightning	34.5	35.5	36	35.5	35.5	32.5
Relay	6	2	4	2	5	2
Puzzles	128	150	135.5	135	130	134.5
Relay	4	6	5	3	1	2
Transfer	22	23.5	26.5	23	24	19
Rapid	66	70	79	72	63	70
TOTAL	292.5	319	308	291.5	288.5	284

Coach's Awards (Book Prizes)

Callum Anderson, David Mackey, Heidi Willis, Wesley Lo, Isabella Bishop, Daniel Lowe, Kezia Karenina, James Ashton, Grace Lanspeary & Jak Carty

At the conclusion of each of the coaching sessions, each coach allocated a total of 6 points to participants in the group. Most often 3, 2, 1 points for effort and attitude, but some awarding 1 point to each participant, or another method not exceeding 6 points per session. No player was allocated more than 3 points per session.

Players who were part of the winning team were excluded from book prizes. This ensured a further broad distribution of prizes in the event (ie 20 of 60 children were recognized at the presentation as either members of the winning team or recipients of book prizes)

Individual Event Winners (medals)

Rapid Champion: Michael Kethro **Lightning Champion:** Willis Lo

Transfer Champions: Jak Carty & Grace Lanspeary

2010 Winter Camp Lightning - Round 7

Standings

Place	Name	Feder	Rtg	Loc	Club	Score
1	Lo, Willis				Willis	6.5
2-3	Kethro, Michael				Michael	6
	Karattiyattil, Bazli				Bazli	6
4	Carty, Jak				Jak	5.5
5-13	Qi, Glen				Glen	5
	Skinner, Isaac				Jak	5
	Shin, Donghoon				Donghoon	5
	Zhou, Anna				Willis	5
	Ashton, James				Donghoon	5
	Wolffs, Walter				Donghoon	5
	Kalele, Nikhil				Glen	5
	Flood, Amy				Donghoon	5
	Glanville, Mark				Willis	5
14	Lowe, Daniel				Michael	4.5
15-29	Press, Harry				Willis	4
	Cordeiro, Daniel				Bazli	4
	Lo, Wesley				Michael	4
	Tong, Kathleen				Donghoon	4
	Dal Pozzo, Sebastian				Glen	4
	Neely, Daniel				Bazli	4
	Lanspeary, Grace				Jak	4
	Smith, Aislinn				Glen	4
	Li, Tina				Michael	4
	Jewell, Aynslie				Michael	4
	Mackay, David				Michael	4
	Karenina, Kezia				Glen	4
	King, Lucas				Jak	4
	Lester, Ben				Jak	4
	Kirk, Rosie				Bazli	4
30-32	Campbell, Caleb				Jak	3.5
	Elkoubi, Itay				Glen	3.5
	Lanspeary, Andrew				Willis	3.5
33-46	Tozer, Olivia				Donghoon	3
	Searle, Daniel				Donghoon	3
	Tong, Helen				Willis	3
	Bishop, Isabella				Michael	3
	Sugerman, Lucy				Bazli	3
	Bradley, Christopher				Michael	3
	Harsdorf, Tahlia				Glen	3
	Derwent, Hannah				Bazli	3
	Campbell, Finn				Willis	3
	Yuan, Joey				Bazli	3
	Wu, Renee				Jak	3
	Nicholson, Amy				Willis	3
	Nicholson, Jeremy				Bazli	3
	Lanspeary, Angela				Bazli	3
47	Lee, Elvin				Jak	2.5
48-55	Villarreal, Natalie				Donghoon	2
	Willis, Heidi				Michael	2

	Hutley, Olivia	Jak	2
	Kethro, Erica	Donghoon	2
	Glanville, Adam	Glen	2
	Polak, Isobel	Willis	2
	Murphy, Charlotte	Jak	2
	Hyett, Barkly	Donghoon	2
56	Anderson, Callum	Bazli	1.5
57-59	Sugerman, Zoe	Michael	1
	Macfarlane, Mercedes	Glen	1
	Souksavat, Pascal	Glen	1
60	Anderson, Hamish	Willis	0.5

Cross Table

No	Name	Feder	Rtg	1	2	3	4	5	6	7
1	Lo, Willis			9:W	38:W	11:W	4:D	24:W	3:W	5:W
2	Kethro, Michael			33:W	35:W	15:W	5:W	3:L	4:W	7:W
3	Karattiyattil, Bazli			57:W	48:W	18:W	10:W	2:W	1:L	6:W
4	Carty, Jak			20:W	34:W	6:W	1:D	14:W	2:L	16:W
5	Qi, Glen			13:W	16:W	21:W	2:L	10:W	8:W	1:L
6	Skinner, Isaac			50:W	19:W	4:L	13:W	11:W	15:W	3:L
7	Shin, Donghoon			39:W	40:W	17:W	14:L	9:W	20:W	2:L
8	Zhou, Anna			28:W	17:L	26:W	21:W	34:W	5:L	23:W
9	Ashton, James			1:L	58:W	47:W	17:W	7:L	14:W	20:W
10	Wolffs, Walter			46:W	23:W	30:W	3:L	5:L	50:W	24:W
11	Kalele, Nikhil			37:W	22:W	1:L	43:W	6:L	36:W	18:W
12	Flood, Amy			15:L	25:W	34:L	44:W	33:W	17:W	22:W
13	Glanville, Mark			5:L	54:W	33:W	6:L	48:W	35:W	15:W
14	Lowe, Daniel			36:W	30:D	19:W	7:W	4:L	9:L	40:W
15	Press, Harry			12:W	41:W	2:L	16:W	18:W	6:L	13:L
16	Cordeiro, Daniel			45:W	5:L	22:W	15:L	25:W	26:W	4:L
17	Lo, Wesley			56:W	8:W	7:L	9:L	38:W	12:L	36:W
18	Tong, Kathleen			51:W	24:W	3:L	23:W	15:L	39:W	11:L
19	Dal Pozzo, Sebastian			44:W	6:L	14:L	58:W	22:L	21:W	34:W
20	Neely, Daniel			4:L	52:W	56:W	36:W	35:W	7:L	9:L
21	Lanspeary, Grace			43:W	49:W	5:L	8:L	42:W	19:L	35:W
22	Smith, Aislinn			55:W	11:L	16:L	51:W	19:W	38:W	12:L
23	Li, Tina			60:W	10:L	38:W	18:L	41:W	40:W	8:L
24	Jewell, Aynslie			59:W	18:L	48:W	42:W	1:L	34:W	10:L
25	Mackay, David			30:L	12:L	52:W	50:W	16:L	43:W	39:W
26	Karenina, Kezia			35:L	37:W	8:L	53:W	49:W	16:L	33:W
27	King, Lucas			48:L	57:W	42:L	33:L	45:W	37:W	44:W
28	Lester, Ben			8:L	36:L	37:L	57:W	52:W	49:W	41:W
29	Kirk, Rosie			49:L	33:L	45:W	37:L	53:W	48:W	42:W
30	Campbell, Caleb			25:W	14:D	10:L	38:L	56:W	41:L	55:W
31	Elkoubi, Itay			0:L	0:	0:	0:	0:	0:	0:
32	Lanspeary, Andrew			0:L	0:	0:	0:	0:	0:	0:
33	Tozer, Olivia			2:L	29:W	13:L	27:W	12:L	47:W	26:L
34	Searle, Daniel			52:W	4:L	12:W	41:W	8:L	24:L	19:L
35	Tong, Helen			26:W	2:L	40:W	39:W	20:L	13:L	21:L
36	Bishop, Isabella			14:L	28:W	44:W	20:L	47:W	11:L	17:L
37	Sugerman, Lucy			11:L	26:L	28:W	29:W	40:L	27:L	51:W
38	Bradley, Christopher			58:W	1:L	23:L	30:W	17:L	22:L	53:W
39	Harsdorf, Tahlia			7:L	45:W	49:W	35:L	43:W	18:L	25:L
40	Derwent, Hannah			53:W	7:L	35:L	54:W	37:W	23:L	14:L

41 Campbell, Finn	54:W	15:L	53:W	34:L	23:L	30:W	28:L
42 Yuan, Joey	47:W	56:L	27:W	24:L	21:L	52:W	29:L
43 Wu, Renee	21:L	46:W	51:W	11:L	39:L	25:L	50:W
44 Nicholson, Amy	19:L	50:W	36:L	12:L	46:W	51:W	27:L
45 Nicholson, Jeremy	16:L	39:L	29:L	55:W	27:L	58:W	48:W
46 Lanspeary, Angela	10:L	43:L	57:W	48:L	44:L	54:W	49:W
47 Lee, Elvin	42:L	60:W	9:L	56:W	36:L	33:L	0:L
48 Villarreal, Natalie	27:W	3:L	24:L	46:W	13:L	29:L	45:L
49 Willis, Heidi	29:W	21:L	39:L	60:W	26:L	28:L	46:L
50 Hutley, Olivia	6:L	44:L	59:W	25:L	58:W	10:L	43:L
51 Kethro, Erica	18:L	59:W	43:L	22:L	54:W	44:L	37:L
52 Glanville, Adam	34:L	20:L	25:L	59:W	28:L	42:L	58:W
53 Polak, Isobel	40:L	55:W	41:L	26:L	29:L	57:W	38:L
54 Murphy, Charlotte	41:L	13:L	55:W	40:L	51:L	46:L	59:W
55 Hyett, Barkly	22:L	53:L	54:L	45:L	57:W	59:W	30:L
56 Anderson, Callum	17:L	42:W	20:L	47:L	30:L	0:L	0:L
57 Sugerman, Zoe	3:L	27:L	46:L	28:L	55:L	53:L	0:W
58 Macfarlane, Mercedes	38:L	9:L	60:W	19:L	50:L	45:L	52:L
59 Souksavat, Pascal	24:L	51:L	50:L	52:L	60:W	55:L	54:L
60 Anderson, Hamish	23:L	47:L	58:L	49:L	59:L	0:L	0:L

by Swiss Perfect (TM) www.swissperfect.com

2010 Winter Camp Transfer - Round 9

Standings

Place	Name	Feder	Rtg	Loc	Club	Score
1	Jak/Grace,				Jak	8
2-3	Anna/Willis,				Willis	7
	Donghoon/Walter,				Donghoon	7
4-7	Bazli/Lucy,				Bazli	6
	Olivia H (Emma)/Charlotte,				Jak	6
	Michael/David,				Michael	6
	James/Erica,				Donghoon	6
8	Daniel C/Daniel N,				Bazli	5.5
9-16	Glen/Sebastian,				Glen	5
	Bella/Christopher,				Michael	5
	Amy N/Harry,				Willis	5
	Amy F/Kathleen,				Donghoon	5
	Lucas/Isaac,				Jak	5
	Tina/Wesley,				Michael	5
	Daniel L/Heidi,				Michael	5
	Nikhil/Itay,				Glen	5
17	Barkly/Natalie,				Donghoon	4.5
18-23	Kezia/Aislinn,				Glen	4
	Daniel S/Olivia T,				Donghoon	4
	Callum/Hannah,				Bazli	4
	Ben/Renee,				Jak	4
	Hamish/Mark,				Willis	4
	Finn/Andrew,				Willis	4
24-25	Rosie/Joey,				Bazli	3.5
	Isobel/Helen,				Willis	3.5
26-28	Caleb/Elvin,				Jak	3
	Angela/Jeremy,				Bazli	3
	Adam/Mercedes,				Glen	3
29-30	Tahlia/Pascal,				Glen	2
	Aynslie/Zoe,				Michael	2

Cross Table

No	Name	Feder	Rtg	1	2	3	4	5	6	7	8	9
1	Jak/Grace,			17:W	2:W	3:L	10:W	11:W	9:W	5:W	4:W	6:W
2	Anna/Willis,			22:W	1:L	18:W	14:W	3:W	6:W	9:W	5:W	4:L
3	Donghoon/Walter,			12:W	14:W	1:W	6:L	2:L	11:W	13:W	9:W	10:W
4	Bazli/Lucy,			7:W	25:W	13:W	9:L	5:L	10:W	18:W	1:L	2:W
5	Olivia H (Emma)/Charlotte,			20:W	19:W	9:L	21:W	4:W	8:W	1:L	2:L	11:W
6	Michael/David,			26:W	10:W	24:W	3:W	9:L	2:L	12:W	13:W	1:L
7	James/Erica,			4:L	21:L	0:W	26:W	10:L	15:W	20:W	12:W	9:W
8	Daniel C/Daniel N,			24:D	12:L	27:W	17:W	13:W	5:L	11:L	21:W	20:W
9	Glen/Sebastian,			27:W	11:W	5:W	4:W	6:W	1:L	2:L	3:L	7:L
10	Bella/Christopher,			18:W	6:L	29:W	1:L	7:W	4:L	23:W	13:W	3:L
11	Amy N/Harry,			23:W	9:L	22:W	15:W	1:L	3:L	8:W	18:W	5:L
12	Amy F/Kathleen,			3:L	8:W	19:W	13:L	23:W	14:W	6:L	7:L	24:W
13	Lucas/Isaac,			21:W	15:W	4:L	12:W	8:L	20:W	3:L	10:L	19:W
14	Tina/Wesley,			0:W	3:L	20:W	2:L	15:W	12:L	19:L	30:W	18:W
15	Daniel L/Heidi,			29:W	13:L	25:W	11:L	14:L	7:L	0:W	22:W	17:W
16	Nikhil/Itay,			0:L	0:	0:	0:	0:	0:	0:	0:	0:
17	Barkly/Natalie,			1:L	22:L	28:W	8:L	25:D	29:W	26:W	24:W	15:L

18 Kezia/Aislinn,	10:L 26:W 2:L 19:W 21:W 24:W 4:L 11:L 14:L
19 Daniel S/Olivia T,	28:W 5:L 12:L 18:L 27:W 21:W 14:W 6:L 13:L
20 Callum/Hannah,	5:L 27:W 14:L 24:W 29:W 13:L 7:L 23:W 8:L
21 Ben/Renee,	13:L 7:W 23:W 5:L 18:L 19:L 29:W 8:L 26:W
22 Hamish/Mark,	2:L 17:W 11:L 29:L 26:L 0:W 27:W 15:L 28:W
23 Finn/Andrew,	11:L 30:W 21:L 25:W 12:L 26:W 10:L 20:L 27:W
24 Rosie/Joey,	8:D 28:W 6:L 20:L 30:W 18:L 25:W 17:L 12:L
25 Isobel/Helen,	30:W 4:L 15:L 23:L 17:D 28:W 24:L 27:L 0:W
26 Caleb/Elvin,	6:L 18:L 30:W 7:L 22:W 23:L 17:L 0:W 21:L
27 Angela/Jeremy,	9:L 20:L 8:L 28:W 19:L 30:W 22:L 25:W 23:L
28 Adam/Mercedes,	19:L 24:L 17:L 27:L 0:W 25:L 30:W 29:W 22:L
29 Tahlia/Pascal,	15:L 0:W 10:L 22:W 20:L 17:L 21:L 28:L 30:L
30 Aynslie/Zoe,	25:L 23:L 26:L 0:W 24:L 27:L 28:L 14:L 29:W

by Swiss Perfect (TM) www.swissperfect.com

2010 Winter Camp Rapid - Round 7

Standings

Place	Name	Feder	Rtg	Loc	Club	Score
1	Kethro, Michael			1057	Michael	6.5
2-3	Karattiyattil, Bazli			808	Bazli	6
	Lo, Willis			1268	Willis	6
4-14	Qi, Glen			1091	Glen	5
	Carty, Jak			751	Jak	5
	Press, Harry			922	Willis	5
	Lo, Wesley				Michael	5
	Bradley, Christopher			456	Michael	5
	Zhou, Anna			864	Willis	5
	Wolffs, Walter			331	Donghoon	5
	Shin, Donghoon			661	Donghoon	5
	Ashton, James			558	Donghoon	5
	Flood, Amy			504	Donghoon	5
	Smith, Aislinn			458	Glen	5
15-27	Neely, Daniel			517	Bazli	4
	Kalele, Nikhil			664	Glen	4
	Cordeiro, Daniel			540	Bazli	4
	Dal Pozzo, Sebastian			495	Glen	4
	Lanspeary, Grace			470	Jak	4
	Glanville, Mark			569	Willis	4
	Tong, Kathleen			446	Donghoon	4
	Lowe, Daniel			458	Michael	4
	Tong, Helen			218	Willis	4
	Searle, Daniel			274	Donghoon	4
	Wu, Renee			373	Jak	4
	Glanville, Adam			221	Glen	4
	Tozer, Olivia				Donghoon	4
28-33	Karenina, Kezia			454	Glen	3.5
	Skinner, Isaac			658	Jak	3.5
	Campbell, Caleb			247	Jak	3.5
	Yuan, Joey				Bazli	3.5
	Elkoubi, Itay				Glen	3.5
	Lanspeary, Andrew				Willis	3.5
34-45	Jewell, Aynslie			158	Michael	3
	Mackay, David				Michael	3
	Li, Tina			236	Michael	3
	Nicholson, Amy			284	Willis	3
	Kirk, Rosie			230	Bazli	3
	Hyett, Barkly			243	Donghoon	3
	Derwent, Hannah			351	Bazli	3
	Nicholson, Jeremy			189	Bazli	3
	Bishop, Isabella			188	Michael	3
	Lester, Ben			147	Jak	3
	Sugerman, Lucy			264	Bazli	3
	Harsdorf, Tahlia			121	Glen	3
46-48	Villarreal, Natalie			158	Donghoon	2.5
	King, Lucas				Jak	2.5
	Campbell, Finn			280	Willis	2.5
49-56	Lee, Elvin				Jak	2

	Lanspeary, Angela		Bazli	2
	Kethro, Erica		Donghoon	2
	Polak, Isobel		Willis	2
	Macfarlane, Mercedes		Glen	2
	Willis, Heidi		Michael	2
	Hutley, Olivia		Jak	2
	Murphy, Charlotte	100	Jak	2
57-58	Anderson, Callum		Bazli	1.5
	Sugerman, Zoe		Michael	1.5
59	Souksavat, Pascal		Glen	1
60	Anderson, Hamish		Willis	0

Cross Table

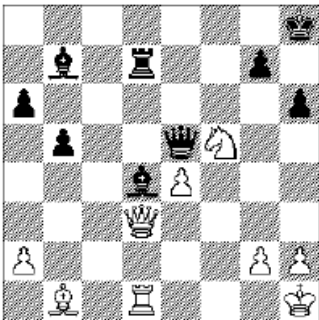
No	Name	Feder	Rtg	1	2	3	4	5	6	7
1.	Lo, Willis			30:W	16:W	12:W	6:L	2:W	20:W	52:W
2.	Qi, Glen			31:W	15:W	9:D	5:W	1:L	11:W	4:D
3.	Kethro, Michael			32:W	18:W	14:W	7:W	4:D	6:W	25:W
4.	Press, Harry			33:W	17:W	11:W	25:W	3:D	7:L	2:D
5.	Zhou, Anna			34:W	20:L	30:W	2:L	32:W	18:W	14:W
6.	Karattiyattil, Bazli			35:W	19:W	13:W	1:W	9:W	3:L	7:W
7.	Carty, Jak			36:W	22:W	20:W	3:L	21:W	4:W	6:L
8.	Kalele, Nikhil			37:W	24:W	25:L	9:L	28:W	21:W	15:L
9.	Shin, Donghoon			38:W	26:W	2:D	8:W	6:L	10:D	16:W
10.	Skinner, Isaac			39:W	25:L	31:W	20:L	29:W	9:D	19:L
11.	Glanville, Mark			40:W	28:W	4:L	22:L	30:W	2:L	32:W
12.	Ashton, James			41:W	52:W	1:L	21:L	31:W	23:W	17:W
13.	Cordeiro, Daniel			42:W	54:W	6:L	24:W	22:W	25:L	20:L
14.	Neely, Daniel			43:W	58:W	3:L	28:W	20:L	35:W	5:L
15.	Flood, Amy			44:W	2:L	32:W	38:W	52:L	22:W	8:W
16.	Dal Pozzo, Sebastian			46:W	1:L	33:W	35:W	25:L	38:W	9:L
17.	Lanspeary, Grace			47:W	4:L	34:W	52:L	36:W	54:W	12:L
18.	Lowe, Daniel			48:W	3:L	35:L	39:W	33:W	5:L	60:W
19.	Smith, Aislinn			49:W	6:L	36:W	60:W	54:W	52:L	10:W
20.	Bradley, Christopher			51:W	5:W	7:L	10:W	14:W	1:L	13:W
21.	Karenina, Kezia			52:L	60:W	37:W	12:W	7:L	8:L	30:D
22.	Tong, Kathleen			53:W	7:L	39:W	11:W	13:L	15:L	38:W
23.	Wu, Renee			54:L	41:W	38:L	37:W	34:W	12:L	40:W
24.	Derwent, Hannah			55:W	8:L	40:W	13:L	35:L	60:L	42:W
25.	Wolffs, Walter			56:W	10:W	8:W	4:L	16:W	13:W	3:L
26.	Nicholson, Amy			57:W	9:L	52:L	41:W	38:L	36:W	35:L
27.	Campbell, Finn			58:L	42:W	60:L	54:L	48:D	46:W	31:L
28.	Searle, Daniel			59:W	11:L	58:W	14:L	8:L	37:W	54:W
29.	Sugerman, Lucy			60:L	43:W	54:L	40:W	10:L	47:W	34:L
30.	Campbell, Caleb			1:L	46:W	5:L	48:W	11:L	41:W	21:D
31.	Hyett, Barkly			2:L	44:W	10:L	47:W	12:L	58:L	27:W
32.	Li, Tina			3:L	48:W	15:L	51:W	5:L	55:W	11:L
33.	Kirk, Rosie			4:L	47:W	16:L	58:W	18:L	40:L	49:W
34.	Glanville, Adam			5:L	51:W	17:L	53:W	23:L	59:W	29:W
35.	Tong, Helen			6:L	49:W	18:W	16:L	24:W	14:L	26:W
36.	Nicholson, Jeremy			7:L	53:W	19:L	55:W	17:L	26:L	47:W
37.	Bishop, Isabella			8:L	55:W	21:L	23:L	49:W	28:L	51:W
38.	Jewell, Aynslie			9:L	57:W	23:W	15:L	26:W	16:L	22:L
39.	Villarreal, Natalie			10:L	56:W	22:L	18:L	60:D	48:L	55:W
40.	Lester, Ben			11:L	59:W	24:L	29:L	51:W	33:W	23:L

41. Harsdorf, Tahlia	12:L	23:L	49:W	26:L	53:W	30:L	59:W
42. Murphy, Charlotte	13:L	27:L	51:L	57:W	55:L	56:W	24:L
43. Anderson, Callum	14:L	29:L	53:L	49:L	59:L	44:W	57:D
44. Anderson, Hamish	15:L	31:L	57:L	59:L	56:L	43:L	46:L
45. Elkoubi, Itay	:L	:	:	:	:	:	:
46. Hutley, Olivia	16:L	30:L	55:L	56:W	58:L	27:L	44:W
47. Kethro, Erica	17:L	33:L	59:W	31:L	57:W	29:L	36:L
48. King, Lucas	18:L	32:L	56:W	30:L	27:D	39:W	58:L
49. Lanspeary, Angela	19:L	35:L	41:L	43:W	37:L	53:W	33:L
50. Lanspeary, Andrew	:L	:	:	:	:	:	:
51. Lee, Elvin	20:L	34:L	42:W	32:L	40:L	57:W	37:L
52. Lo, Wesley	21:W	12:L	26:W	17:W	15:W	19:W	1:L
53. Macfarlane, Mercedes	22:L	36:L	43:W	34:L	41:L	49:L	56:W
54. Mackay, David	23:W	13:L	29:W	27:W	19:L	17:L	28:L
55. Polak, Isobel	24:L	37:L	46:W	36:L	42:W	32:L	39:L
56. Souksavat, Pascal	25:L	39:L	48:L	46:L	44:W	42:L	53:L
57. Sugerman, Zoe	26:L	38:L	44:W	42:L	47:L	51:L	43:D
58. Tozer, Olivia	27:W	14:L	28:L	33:L	46:W	31:W	48:W
59. Willis, Heidi	28:L	40:L	47:L	44:W	43:W	34:L	41:L
60. Yuan, Joey	29:W	21:L	27:W	19:L	39:D	24:W	18:L

by Swiss Perfect (TM) www.swissperfect.com

Puzzleopolis


You have 15 minutes to score as many points as possible for your team. You are not expected to finish all of the puzzles—some are harder and worth more points, but you may score just as many points by answering several easier puzzles instead. Pick the puzzles you like best, and move on to the others if you have time. **GOOD LUCK!**



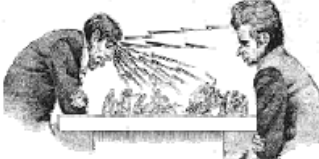
Black to Play & Win
3 points

1.
2.

A man is looking at a portrait and says, "Brothers and sisters I have none, but that man's father is my father's son." The man is looking at a portrait of...









3 points



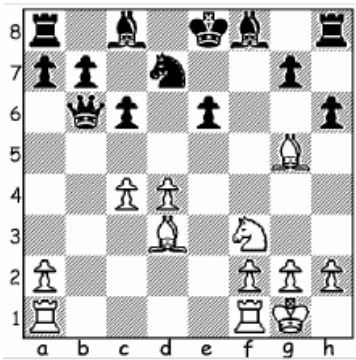
This cartoon is about
Boris S _____
and
Robert F _____

3 points

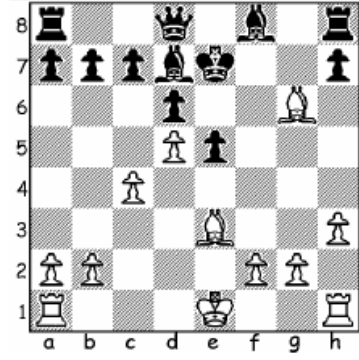
Piece Values—1 point each

	PAWN	_____ points
	KNIGHT	_____ points
	BISHOP	_____ points
	ROOK	_____ points
	QUEEN	_____ points
	KING	<i>Invaluable!</i>

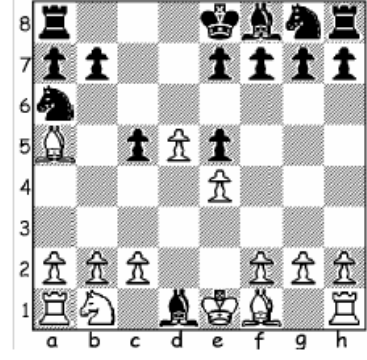
White to Play & Mate in One 1 point each



White Plays _____



White Plays _____



White Plays _____

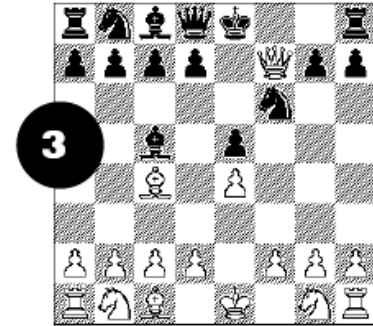
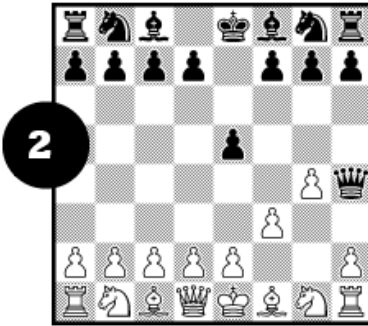
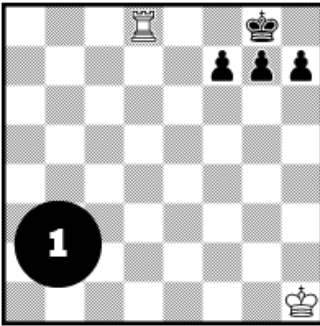
2010 Puzzle Worksheet - page two

10 points—but only if you find every master!

O J K N V O P R A K O N B A K
 X R O D I L I H P E C O R C O
 F L A R S E N W K R E T O N R
 I A N A N D T T Y E R N N A C
 S R E K S A L S Z S G U S L H
 C P B O T V I N N I K A T B N
 H C S T I W O Z M I N T E A O
 E Z E P O L Q V B E B S I P I
 R N L W U N O U S W A U N A T
 Y A I C U R T S P A E W R C E
 T H E H A E R M A R O C Z Y R
 F N P P K E N A I S O R T E P
 A T S R D E S T E I N I T Z Q
 Y A T N O A L Y K S S A P S M
 K T A Q W M Q A S Y M S L O V

- ALEKHINE
- ANAND
- ANDERSEN
- BOTVINNIK
- BRONSTEIN
- CAPABLANCA
- EUWE
- FISCHER
- GRECO
- KARPOV
- KASPAROV
- KERES
- KORCHNOI
- LARSEN
- LASKER
- LOPEZ
- LUCENA
- MAROCZY
- MORPHY
- NIMZOWITSCH
- PETROSIAN
- PHILIDOR
- RETI
- RUBINSTEIN
- SPASSKY
- STAUNTON
- STEINITZ
- SYMSLOV
- TAL

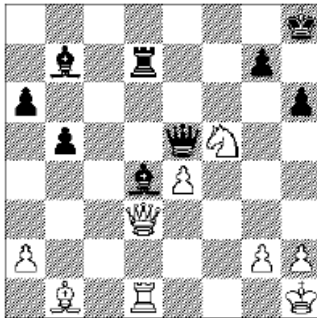
Name that mate—2 points each



1	_____	2	_____
	_____		_____
3	_____	4	_____
	_____		_____

Puzzleopolis

You have 15 minutes to score as many points as possible for your team. You are not expected to finish all of the puzzles—some are harder and worth more points, but you may score just as many points by answering several easier puzzles instead. Pick the puzzles you like best, and move on to the others if you have time. **GOOD LUCK!**

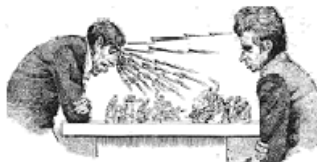


Black to Play & Win
3 points

1 Bg1
Threatening Qxh2#
2.Kxg1 Rxd3

A man is looking at a portrait and says, "Brothers and sisters I have none, but that man's father is my father's son." The man is looking at a portrait of...
His Son







3 points

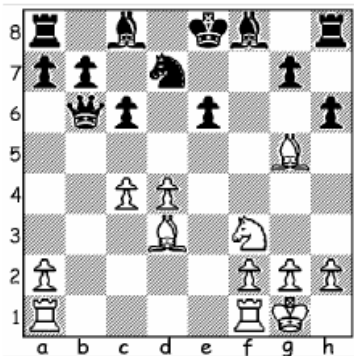
This cartoon is about
Boris Spassky
and
Robert (Bobby) Fischer

3 points

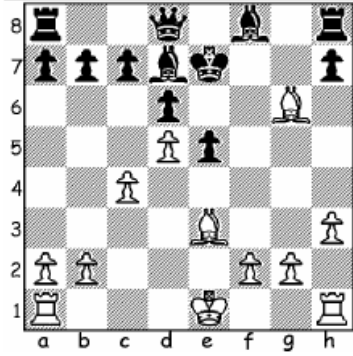
Piece Values—1 point each

-  **PAWN**
1 points
-  **KNIGHT**
3 points
-  **BISHOP**
3 points
-  **ROOK**
5 points
-  **QUEEN**
9 points
-  **KING**
Invaluable!

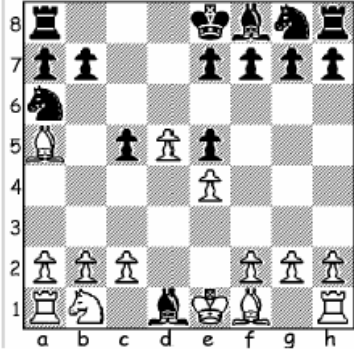
White to Play & Mate in One 1 point each



White Plays Bg6#



White Plays Bg5#



White Plays Bb5#

2010 Puzzle Answer Sheet - page two

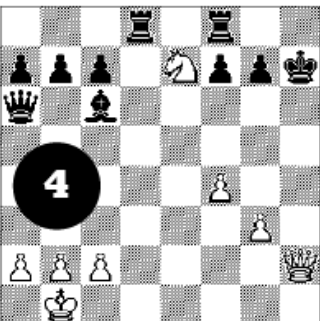
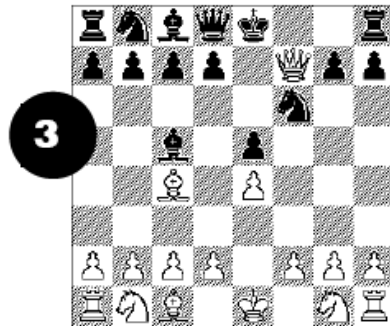
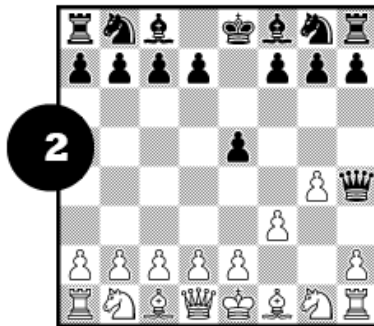
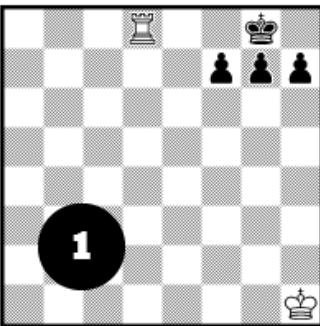
10 points—but only if you find every master!

O J K N V O P R A K O N B A K
 X R O D I L I H P E C O R C O
 F L A R S E N W K R E T O N R
 I A N A N D T T Y E R N N A C
 S R E K S A L S Z S G U S L H
 C P B O T V I N N I K A T B N
 H C S T I W O Z M I N T E A O
 E Z E P O L Q V B E B S I P I
 R N L W U N O U S W A U N A T
 Y A I C U R T S P A E W R C E
 T H E H A E R M A R O C Z Y R
 F N P P K E N A I S O R T E P
 A T S R D E S T E I N I T Z Q
 Y A T N O A L Y K S S A P S M
 K T A Q W M Q A S Y M S L O V

(Over,Down,Direction)

- ALEKHINE(8,15,NW)
- ANAND(2,4,E)
- ANDERSEN(3,15,NE)
- BOTVINNIK(3,6,E)
- BRONSTEIN(13,1,S)
- CAPABLANCA(14,10,N)
- EUWE(6,11,NW)
- FISCHER(1,3,S)
- GRECO(11,5,N)
- KARPOV(10,1,W)
- KASPAROV(1,15,NE)
- KERES(10,1,S)
- KORCHNOI(15,1,S)
- LARSEN(2,3,E)
- LASKER(7,5,W)
- LOPEZ(6,8,W)
- LUCENA(6,8,SW)
- MAROCZY(8,11,E)
- MORPHY(6,15,NW)
- NIMZOWITSCH(11,7,W)
- PETROSIAN(15,12,W)
- PHILIDOR(9,2,W)
- RETI(15,11,N)
- RUBINSTEIN(13,10,NW)
- SPASSKY(14,14,W)
- STAUNTON(12,8,N)
- STEINITZ(7,13,E)
- SYMSLOV(9,15,E)
- TAL(1,11,NE)

Name that mate—2 points each



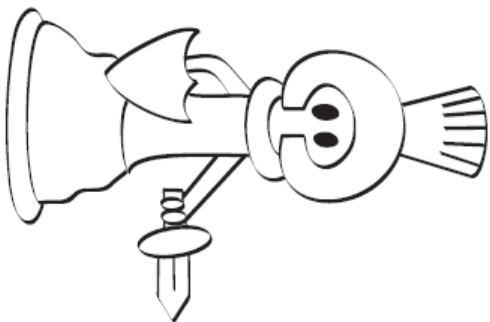
1 Back Rank
Mate

2 Fool's
Mate

3 Scholar's
Mate
(or 4 move
mate)

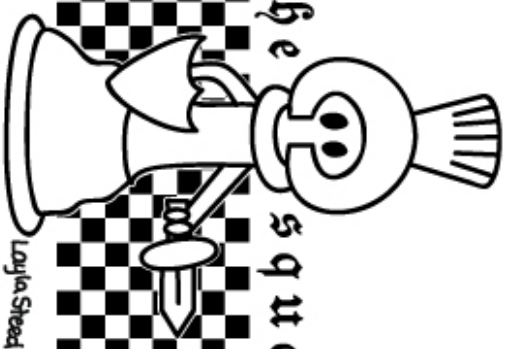
4 Anastasia's
Mate

2010 Winter Camp Shirt Design - *front pocket print & back print*. Royal blue shirt with yellow print (ACT colours).



Winter
Chess
2010

knights of the square table



- | | | |
|-------------------------|---------------------|--------------------|
| Callum Anderson | Erica Kethro | Amy Nicholson |
| Hannah Anderson | Michael Kethro | Jeremy Nicholson |
| James Ashton | Lucas King | Isabel Polak |
| Isabella Bishop | Rosie Kirk | Harry Press |
| Christopher Bradley | Andrew Lanspeary | Glen Qi |
| Caleb Campbell | Angela Lanspeary | Daniel Searle |
| Finn Campbell | Grace Lanspeary | Michael Searle |
| Jak Carthy | Evin Lee | Donghoon Skin |
| Daniel Cordeiro | Ben Lester | Isaac Skinner |
| Sebastian Dal Pozzo | Tina Li | Aislinn Smith |
| Hannah Derwent | Wesley Lo | Pascal Sontsavat |
| Huy Elkoubi | Willis Lo | Lucy Sagerman |
| Amy Flood | Daniel Lowe | Zoe Sagerman |
| Aulfric Gardiner-Garden | Mercedes MacFarlane | Hebertong |
| Adam Glanville | Charlotte Murphy | Kathleen Tong |
| Mark Glanville | Daniel Neely | Olivia Tozer |
| Talia Harsdorf | | Natalie Villarreal |
| Olivia Hattley | | Heidi Willis |
| Barkly Hyett | | Walter Wolffs |
| Aynsley Jewell | | Renee Wu |
| Nikil Kalele | | Joey Yuan |
| Bazil Karattiyattil | | Anna Zhou |
| Kezia Kavinina | | |

act junior chess league